

Annual Review 08

Contents



Louis Stewart 'Surgeon'
National Galleries of Scotland Art Competition for Schools

Chairman's Report	3
Curator's Report	6
The GHAT Collection	8
Exhibitions 2007-2008	10
Royal Aberdeen Children's Hospital	11
Artroom Project	12
Mark Moynihan's 10 Portraits	14
Grampian Hospitals Art Trust 2007-2008	16
Statement of Financial Activities 2007-2008	17
Acknowledgements	18
Artists in the Collection	20

PULL

Ruth Maxwell 'Pull'



Chairman's Report

A few short years ago, on my 60th birthday, I was given a copy of Baden-Powell's Scouting for Boys. I suppose it was meant as a joke, and as I read out choice excerpts to amuse the company, we all sat around the barbeque in the sunshine, eating and drinking and generally having a jolly good time. Then, in mid-sausage, the thought struck me "wait a minute, this book has ruled my life for 50 years!"

At that point I stopped laughing, because although the Irony Age is of course well established, there's still, at the time of writing anyhow, a whole lot of smiling-and-whistling-under-all-difficulties going on, still plenty of people whose integrity is worth more than any amount of money; the idea of service to the common weal still counts for a lot with large sections of the community, and the principle of helping those less fortunate than oneself is still adhered to by people whose work ethic is every bit as strong as it was for us in the 1950s and 60s.

So, just think, how is it that the NHS continues to survive, an apparently anachronistic throwback to a more naïve age, massively complex and forever oscillating between centralised micro-management and endless layered reorganisations exactly like a Mycenaean Palace? Well, for a start, we have paper records instead of clay tablets.... (eh, what, the NHS still has paper records???). Actually, through the efforts of countless bright-eyed and bushy-tailed individuals past and present, that's how. Things don't just happen by themselves; to create a large and mainly effective organisation that really does work takes years of intelligent planning, ceaseless effort on the part of all concerned, adroit procurement of funding and sheer hard work. So, by the time I'd munched my way to sausage-end, I had the answer; in a word: commitment, commitment, commitment.

Which brings me to the Team: GHAT is in full flow, producing a

marvellous variety of projects which bring joy to people enduring pain, suffering and sadness, while lightening the hearts of hard-pressed staff as they toil through yet another seemingly endless day. GHAT achieves all this and more on really quite a small budget (for which we are truly thankful) and as a registered Charity, we are beginning to look for additional ways of raising the funds which we'll need if we are to continue to expand our activities to match demand. So, ideas welcome – contributions too, if you like.



Kerry Phippen 'Evening Catch'

There were many brilliant highlights in GHAT's progress during the past year, all of which created massive interest and approval from every quarter. For example, **Kevin Mackenzie's** beautiful electron microscopy-based images, **Mike McDonnell's** brilliant 'Out of Tune' show featuring artworks wittily constructed from bits & pieces of old instruments and **Mark Moynihan's** splendid exhibition of portraits of members of staff. Underlying the arrangement and pictorial treatment of Mark's subjects was his interest in Identity as indicated by dress or uniform, a feature which gave an additional dimension to his exhibition and which was highlighted by Dr. Roelf Dijkhuizen when he opened the show. Subsequently, thanks to Prof. Zyg Krukowski, GHAT was able to purchase a further set of portraits, and these will be on show as part of the GHAT collection.

The **Artroom** Project provided patients at Roxburghe House, Woodend Hospital and Ugie Hospital (Peterhead) with opportunities to try painting and drawing. The effect on the quality of life for the vast majority of the patients involved in the project has been extraordinary, and points up the fact that creativity is, or ought to be, an essential ingredient in pretty well everybody's life. I think this may turn out to be one of the most worthwhile projects ever initiated by GHAT.

Thanks to a lot of hard work by Kathleen Sinclair, as a pilot event GHAT organised a concert in which Margaret Knight from Music in Hospitals entertained around 40 patients with her excellent harp-playing. Music in Hospitals has for a number of years provided expert musicians to play for long-stay patients in Roxburgh House and Woodend Hospital, and we were delighted to see how well the concert was received.

During 2007-08, GHAT once again dabbled in video/ film production. Opportunities included a short loop-video jointly commissioned by Prof. Phil Hannaford and Dr. Roelf Dijkhuizen for the NHS / University of Aberdeen 60th Anniversary Dinner at the Elphinstone Hall, celebrating some of the achievements of six decades of creative liaison, and also (with the assistance of Martin John Murphy and Shaun Hughes) a

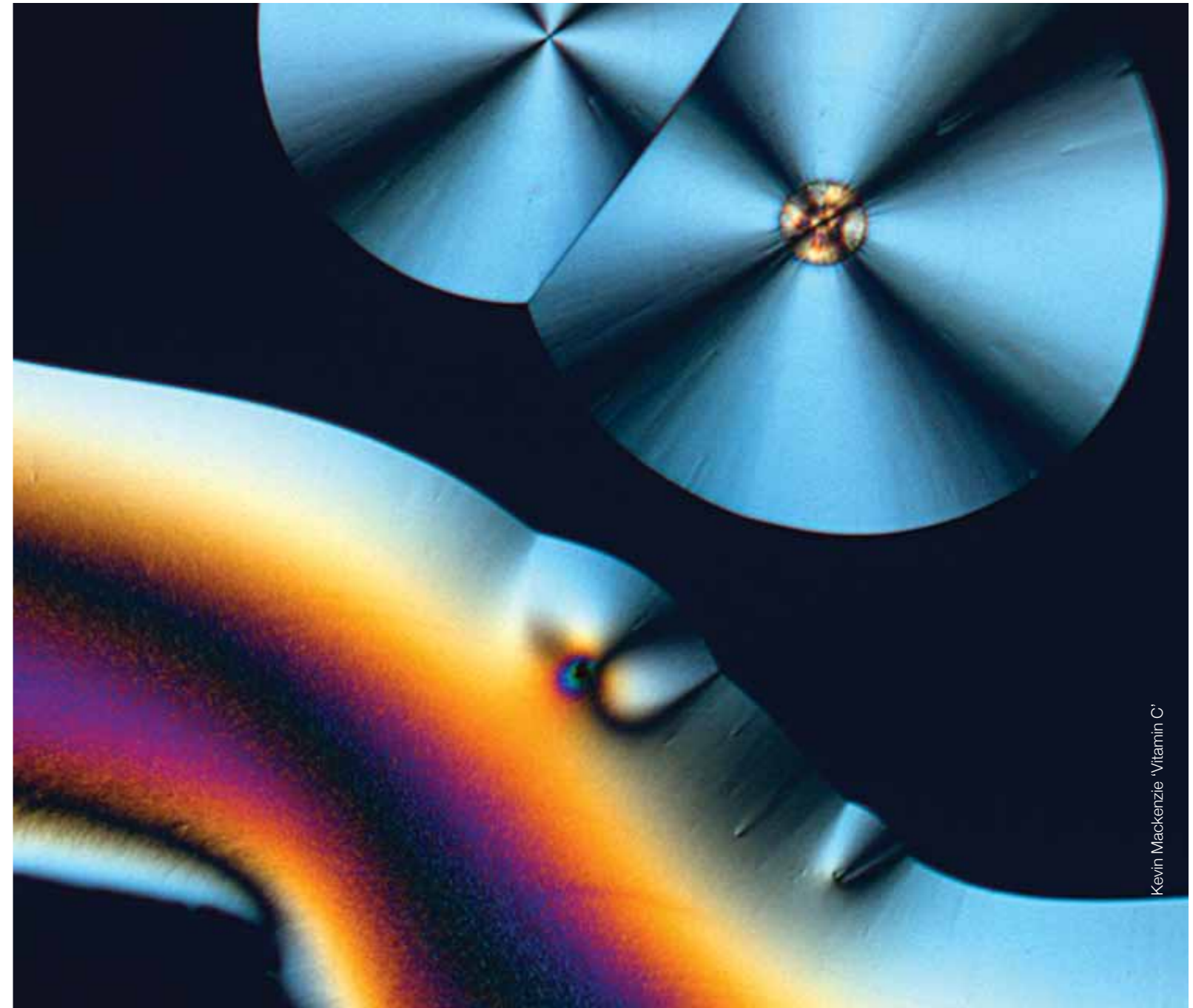
video recording of Professor John Mallard in conversation with Professor Peter Sharp, describing the world-beating (although most regrettably for some reason not Nobel Prize-winning) development of the Whole Body MRI Scanner at Aberdeen.

Thanks to the jointly-applied vision of Professors Hamish McKenzie and Ian Booth, the Matthew Hay Project, which is a joint initiative by the University of Aberdeen, NHS Grampian and The Robert Gordon University, continues to involve GHAT in assisting and advising on the commissioning of new artworks for the Suttie Centre for Teaching and Learning, and it is good to see the knowledge and experience of Mr. Syd Burnett, Art Advisor, being ever more widely appreciated.

By the time you read this, we will all have a new US President, the credit crunch will be old news and Mr. Trump may have cut his first sandy sod. Yet while the world shows constancy only in exponential change, we dare to hope that GHAT will remain a force for good and for improvement. As ever, my grateful thanks and appreciation are due to the fabulous GHAT Core Team, Anne, Sandy, Claire and Carol, as well as to our splendid, experienced, wise and erudite Art Advisors, and last but not least to my tremendously resourceful and knowledgeable Vice-Chairman, Andy Dewar, whose energy, vision and strategy over the years has immensely contributed to the well-being of the arts in Aberdeen, not least to GHAT. I commend this Annual Report to all our readers.



Dr. Donnie Ross
Chairman, GHAT



Kevin Mackenzie 'Vitamin C'

Curator's Report



Carol Imray Sandy Milner Anne Moore Claire Bruce

I am writing this on the train home from Glasgow following a conference on **Young Children and the Arts**. The focus of the conference was on using the arts to “transform and enhance the lives of children and contribute to lifelong creativity and wellbeing”. Those aims fit exactly with two of the projects which GHAT has been focussing on during 2008: the Royal Aberdeen Children’s Hospital (RACH) art commissions and the Artroom Project.

Throughout 2008 the RACH Art Project Group has been involved in commissioning new work for the clinical areas of the children’s hospital. Sally Thomson, Arts Co-ordinator, has been working tirelessly to co-ordinate the artists who have been commissioned to install site specific artworks in treatment rooms and clinical areas of the hospital. She has helped facilitate workshops and consultations between artists, children and staff, which will result in nine unique artistic solutions to enhance the environment for children, their parents and staff. The commissioned artworks are scheduled to be completed by March 2009. See page 11 for more details of this exciting project.

Our other major project, **Artroom**, has been developing over the past year. From September 2007 to April 2008 we ran a Pilot Project in three hospitals across Grampian. Three teams of artists worked directly with patients in Roxburghe House and Woodend Hospital in Aberdeen and Ugie Hospital in Peterhead, introducing small groups of patients in palliative and elderly care to the joy of working with a variety of creative materials. The positive feedback which we received from patients and staff has enabled us to continue the project at Roxburghe House and we are hoping to set up an Artroom project in the Specialist Rehabilitation Unit at Woodend Hospital. More details can be found on page 12.

The versatile and multi-faceted nature of GHAT will hopefully stand us in good stead when we face our next major challenge in 2009. Plans to utilise the Gallery space for clinical services have been confirmed and in early 2009 a new MRI scanner will take the place of artworks in the lower concourse Gallery. As this Annual Review goes to print we are discussing the relocation of the gallery, office and store and will keep you posted about developments. We have been delighted that in all our discussions about the future of GHAT there has been recognition of the important role that art (and GHAT) plays within the hospital community, and a real endeavour to set aside a special place for art in the heart of the hospital.

On the domestic front there have also been changes. Sandy Milner spent part of 2008 in India following her husband’s relocation. We were delighted when Carol Imray agreed to take on some of her old duties and offered support in Sandy’s absence. Carol is currently continuing to job-share with Sandy. Claire Bruce has now taken on all of GHAT’s design work, from invitations to the Annual Review, and also plays a major part in ensuring that the Gallery programme runs smoothly. We continue to install artworks throughout NHS Grampian and will be involved in the commissioning of artwork for several new builds planned to commence in 2009: the new Dental School;

Emergency Care Centre and Forres Hospital and Health Centre. The 2008 exhibition programme was stimulating and varied, ranging from Kevin Mackenzie’s fascinating Micro Art to Mark Moynihan’s beautiful 10 Portraits. We were also delighted to host the **National Galleries of Scotland’s Art Competition for Schools**, which filled the main corridor in ARI with colourful and vibrant artworks by children from throughout Scotland. All in all it has been another action packed and exciting year for GHAT, with 2009 promising to bring with it even more surprises.

Anne Moore
Curator

“Fantastic, It’s great to see a hospital that is full of high quality art works, wonderful, thank you.”



Jak McCord 'Amazing Hats and Headware'
National Galleries of Scotland Art Competition for Schools

The GHAT Collection

In 2007-08 GHAT acquired a total of **135** artworks with a value of **£35,120**

Purchases

GHAT purchased **79** pieces this year, with a total value of **£19,710**.

This included work from several students at the **Gray's School of Art Degree Show**: Donna Dundas; Lindsey Gibb and Anna Shirron. We also purchased a suite of eight prints, entitled Road Trip, from **David McCracken**.

Another major purchase was a suite of six photographic prints by **Dalziel & Scullion**. These photographs, **Unknown Pines**, formed part of their exhibition **Some Distance from the Sun**, which was shown in Aberdeen Art Gallery in 2007.



Dalziel & Scullion 'Digger'



Dalziel & Scullion 'Atlas'



Dalziel & Scullion 'Scots Pine'

Commissions

This year GHAT commissioned a set of 10 portraits of members of staff from the artist **Mark Moynihan**. The 10 Portraits were exhibited in the Gallery at ARI and drew large numbers of staff and visitors to the Gallery. See page 14 for more details.

New work was also commissioned from Susan Grant, Stuart Johnstone, Ruth Maxwell and David Pettigrew for the Word 07 exhibition, **Urban Alphabet**.

Lynne Strachan completed and installed her colourful panel at the entrance to the High Dependency Unit in the Children's Hospital.

Donations

GHAT received 13 donations from various sources, including two watercolours by Alan Morrice, which were purchased by Aberdeen College for Roxburghe House. **READ Well Services** donated a work by Pearl Ozanne, which was purchased from an exhibition at MUSA Gallery.

Shell U.K. Limited continues to support the purchase of artworks by contributing proceeds from the sale of catalogues at the annual Aberdeen Artists Society Exhibition. This year's contribution was put towards the purchase of **Gordon Brown's** painting, Aura 2, which was awarded the GHAT purchase prize at this annual exhibition.

Loans and Rentals

We continue to have 37 works on loan, 30 of which are on long term loan from Exxon Mobil.

29 artworks are being rented by the University of Aberdeen, and are installed throughout the Health Science Building.

Installations

A total of **245** artworks were installed in **30** different locations over **10** sites. These included:

- Clinics & Wards, ARI
- Argyll Dental Clinic
- Garden Medical Centre
- Community Rehabilitation Unit
- Northfield Health Centre
- Woodend Hospital, X-ray Dept
- RACH Parents Rooms



Gordon Brown 'Aura'

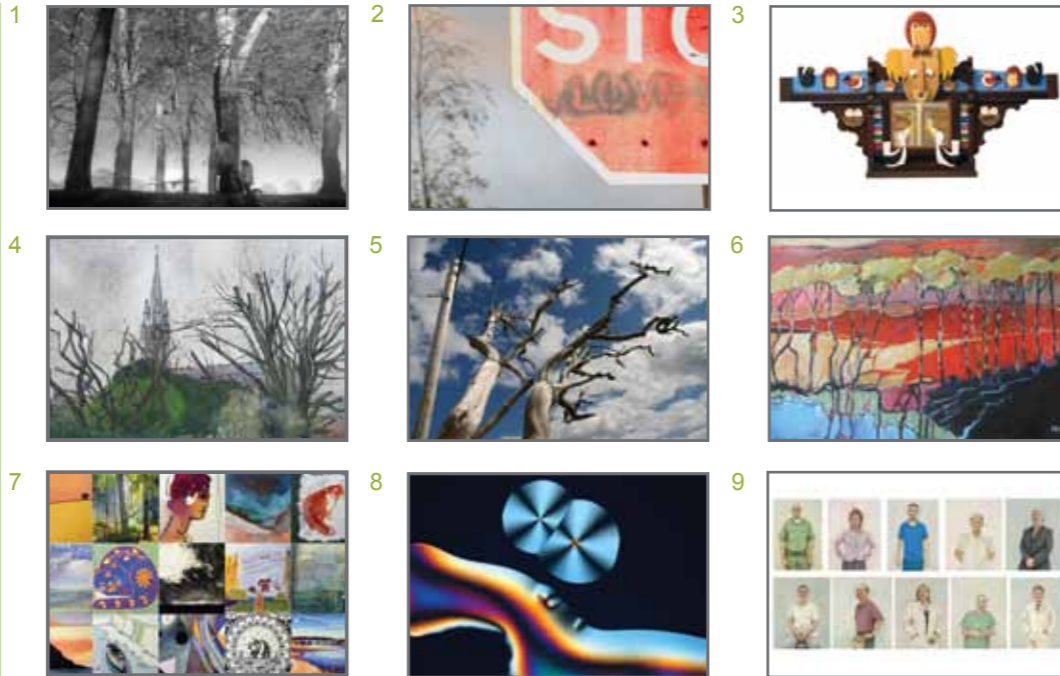


Anna Shirron 'And so it is Just Like You Said it Would be'

GHAT exhibitions 2007 - 2008

The Art Gallery at ARI had another successful programme, ranging from the thought provoking exhibition 'Urban Alphabet', to the unique exhibition of constructed pieces by Mike McDonnell and the staff portraits by Mark Moynihan. Income from sales totalled **£14,158** (including sales of **£7,155** from the CD Exhibition).

1. Gray's Graduates
2. Urban Alphabet
3. Mike McDonnell
4. Jimmy Furneaux
5. Sense Scotland
6. Glenn Neil
7. CD Show 2007
8. Kevin Mackenzie
9. Mark Moynihan



Royal Aberdeen Children's Hospital

The second phase of the RACH Arts Project is nearing completion. It is an ambitious project, which is using an inclusive approach, involving consultation with patients, staff and visitors at each stage. This will result in custom made solutions which help create a sense of ownership of the new environment.

Eight artists and designers are currently contracted to create work throughout the internal areas of the hospital. A published book, documenting the project is also being completed.

- X – ray Treatment rooms
- Day Case Treatment Rooms
- Graphic Novel
- Rosehill house
- Treatment rooms in Outpatients and A&E
- 2nd Floor Lift Lobby (Orkney project with schools in Kirkwall)
- Ward Entrance Area
- Glass front doors and First Floor corridor areas

Each artist has been tasked to work closely with staff, patients and families to get a feel for the department and the types of imagery each age group is interested in. From this the artists then use their art practise to design permanent work for their area of the hospital.

The planning of phase two took eighteen months as each department was canvassed and included in the development of each project. This has enabled the artists, in most cases, to work easily in each department and get feedback from both staff and patients.

Susan T Grant's work for X-ray was the first to be installed and has been extremely well received. Images created from monograms made by the patients scurry across the ceiling using a data projector. Each room has vinyl designs on the walls placed in such a way as to distract patients whilst they undergo treatment. The staff are reporting that the artwork is having an extremely positive impact on their work, it helps patients forget their predicament long enough to help the staff carry out the procedure. Parents have remarked how wonderful the images and projections have been when their child has been receiving treatment in the department.

Work is continuing at full pelt on the other projects, with the installations all due to be completed by March 2009.

Sally Thomson
RACH Arts Co-ordinator



www.rach-art.org.uk

Artroom Project

The **Artroom** Project began to grow following discussions with staff in palliative care and elderly medicine and has evolved through a series of trial art sessions which were offered at Roxburghe House in 2006.

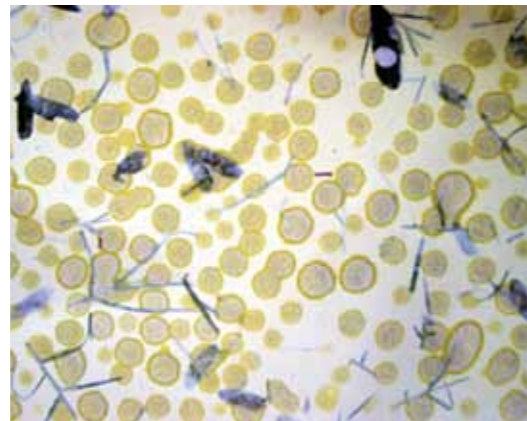
From September 2007 to April 2008 a Pilot Project was set up to give patients the opportunity to work with artists and take part in creative art sessions during their time in hospital. Teams of artists introduced patients to a range of creative activities, working in Roxburghe House, Woodend Hospital, Aberdeen and Ugie Hospital in Peterhead.

Artists who worked on the Pilot Project were Jeanette Cochrane, Heather Delday, Dawn Hynd, Annabel Pattullo and Anna Shirron. We are grateful to them for the enthusiasm and energy which they gave to this project and the valuable feedback that they provided at the end of the pilot.

From the evidence of conversations with patients and the positive response from staff, it would seem that the art sessions were regarded as more than a 'simple diversion' and that they do have an important role to play in allowing patients to engage in new creative activities, develop skills and gain in confidence. Many patients, carers and staff spoke of the importance of providing stimulating activities, which give patients a sense of achievement and self determination.

Patients and staff were unanimous in their appreciation of the project, and the desire to have it continued.

We are pleased to report that funding has been made available to enable the **Artroom** Project to continue at Roxburghe House. On 2 September 2008 Neal Macdonald and Donna Briggs took up their posts as artists and we are delighted to welcome them to Roxburghe House.



All the artwork featured in this section was produced during the Artroom Project.

Thanks to the **Friends of Roxburghe House, Aberdeen City Council** and **NHS Endowment Fund** for their support with funding for this project.

We hope to be able to continue with the project in other areas and are actively looking for funding to make this a reality.

Our thanks once again to Art in Hospital, Glasgow, who continue to be our inspiration.

"Patients are happier and more relaxed."

Nurse, Juniper Ward, Woodend Hospital

"It brings the patients together, they are communicating more and their minds are more active."

Nurse, Ravenscraig Ward, Ugie Hospital

"I think they have learned skills they did not know they had!"

Staff Nurse, Roxburghe House

"I love it. I feel it lifts me up. This has taken my mind off things as well. I wish they could do it every week."

Patient, Roxburghe House



Mark Moynihan - 10 Portraits

What makes us who we are - the way we look, our family and friends, the work that we do every day?

In August 2006, Grampian Hospitals Art Trust commissioned artist **Mark Moynihan** to paint portraits of ten members of staff from within NHS Grampian, each of whom has a very different and important role to play. As an artist who works with portraiture Mark is interested in ideas of identity and the relationship between the individual, their role in society and cultural stereotypes.

Each of these subjects allowed Mark a unique insight into their individual roles by allowing him to photograph and interview them whilst at work. We are indebted to the sitters for their generosity and patience in realising this project, and acknowledge that this exhibition represents only a small cross-section of the many individuals who are vital to the running of NHS Grampian.



Prof. Zygmunt Krukowski
Consultant Surgeon



Vivienne Reid
Theatre Staff Nurse



John Reid
State Registered
Paramedic



Pat Smith
Associate Specialist



Dave Yule
Porter



Yvonne McDonald
Domestic Assistant



Susan Stevenson
Records Service Manager
(CHI Gatekeeper)



Joe Collier
Unit Nurse Manager



Jim Clark
Joiner



Joyce Davidson
Principal Technologist in
Nuclear Medicine



Vivienne Reid
Theatre Staff Nurse



Prof. Zygmunt Krukowski
Consultant Surgeon

“ Fantastic exhibition, made my trip to ARI enjoyable, thank you! ”

The portraits were exhibited in the Art Gallery at ARI and in the Health Science Building at the Robert Gordon University.

Patron	John Bellany
Chairman	Dr Donnie G Ross
Trustees	Dr Donald G Ross – Chairman Sydney Burnett Alec Cumming Andy Dewar Mrs C Farquharson Professor Marion Hall
Curator Business Manager Art Administrator	Anne Moore Sandy Milner, Carol Imray Claire Bruce
Royal Aberdeen Children's Hospital Arts Co-ordinator	Sally Thomson
Art Advisors	Donald Addison Sydney Burnett Andy Dewar David Henderson Rosemary McKenzie Karen McKimmie Michael Waight Allan Watson
Board of Management	Donald G Ross – Chairman Andy Dewar – Vice Chairman Sydney Burnett Alan Gall Andrew Jackson Terry Mackie Stuart MacDonald Tom Mason Dr Paul Sclare Dr Ivan Wisely
Artroom Project, Roxburghe House	Neal Macdonald, Lead Artist Donna Briggs, Artist
Volunteers Student Placements	Annette Korstanje, Kathleen Sinclair Martin Buchan, Scott Simpson
Photography	Stuart Johnstone, Claire Bruce
Auditor Secretary to Board of Trustees	Ritson Smith Erlend Flett, Raeburn Christie Clark and Wallace

Statement of Financial Activities 2007/08

	2008	2007
	£	£
Incoming Resources		
Voluntary income – donations and grants	124,584	173,233
Activities for generating funds – commission on sales, sales of CDs	14,478	4,023
Investment income	1,835	1,009
Total incoming resources	140,897	178,265
Resources Expended		
Cost of generating funds – printing, advertising, refreshments	2,625	3,524
Charitable activities – activities undertaken directly	79,603	50,844
– support costs	14,467	12,886
Governance costs – legal and audit fees	3,819	3,535
Total resources expended	100,514	70,789
Net incoming resources for the year	40,383	107,476
(Decrease)/increase on revaluation of artworks	(2,272)	2,386
Net movement in funds during the year	38,111	109,862
Balances brought forward at 6 April 2006	1,359,904	1,250,042
Balances carried forward at 5 April 2008	1,398,015	1,359,904
Represented by		
Artworks & sculptures	1,352,921	1,323,252
Other fixed assets	2,373	1,943
Other assets	74,701	68,183
	1,429,995	1,393,378
– Liabilities	(31,980)	(33,474)
Total	1,398,015	1,359,904

Acknowledgements

Key Supporters

NHS Grampian
NHS Grampian Endowment Committee

Grants

Aberdeen City Council
The Archie Foundation
Big Lottery Fund
Friends of Roxburghe House
Hugh Fraser Foundation
The MacRobert Trust
The Morningfield Association

Thanks to

Aberdeen Artists Society
Aberdeen College
Art in Hospital
GHAT Art Advisors
Halcon Print and Design
Hazlehead Academy
Ian McDougall
Iain Morrison
READ Well Services
Peter Rymill
Shell U.K. Limited
Talisman
University of Aberdeen
WRVS



Artists in The Collection

A

Victoria Achache
Norman Adams
Donald Addison
Michael Agnew
A.N. Aitkenhead
Laura Aikenhead
Gavin Alexander
Patrick Alexander
Sophie Alln
John Paul Allon
Malcolm Appleby
Carmen Ambrozevich
Blair Anderson
Deborah Anne Anderson
Michelle Anderson
Keith Andrews
Brownlee Armour
Derek Ashby
Nina C M Ashby
Malena Astrom
David Atherton
Eric Auld

B

Joan Backes
Ruth Bailey
Robert Bain
Robin Banks
Lesley Banks
Jo Barker
Neil S Barr
Peter Barton
Bob Batchelor
Bill Baxter
Sandra Baxter
Michael Beagrie
Ruth Beardsworth
JG Beattie
Prof W Bednarowski
Reinhard Behrens
John Bellany
Zoe Benbow
Jill Benzies
Roy Benzies
Robert Bermingham
Allan Beveridge
Marco Bevilacqua

C

William Cadenhead
Joyce Cairns
Kelly Anne Cairns
Tom Calder
Bob Callender
Euan Cameron
Mary Cane
Gill Caplan
Val Carr
Lois Carsons
Lucy Casson
Belinda Channer
June Chapman
Tessa Charles
Louise Charlton

Charles Birnie
Alison Black
B R Blacklaws
Frank Boag
Kirsten Body
Anna Boggon
Marj Bond
Sheena Bowman
James Boyd
Michael Bradshaw
Andrew Braidwood
Jacki Brandie
Michael Brennand-Wood
Donna Briggs
Colin Brown
Erland Brown
J Gordon Brown
Gordon Bryce
Dennis Buchan
Jim Buckley
Joan Burgoyne
Gordon Burnett
Syd Burnett
Alexander Burns
Deborah Burr
Robbie Bushe
Rosemary Bushe
Howard Butterworth
Donald Buyers
Keith Byres

D

Dalziel + Scullion
Harvey Daniels
Dorothy Darnell
Kimberley Davidson
W Davidson
Ann Dean
Patrick Defosse
Richard Demarco
Robyn Denny

Linzi Chalmers
Malcolm Cheape
George Cheyne
Fiona Clarke
Gordon Clarke
Jonathon Claxton
Anne Clipson
Maggie Clyde
Doug Cocker
George Collier
Julia F Colquitt
Rowena Comrie
Dilys Connon
WJ Connon
Susan Convery
Ashley Cook
Christopher Cook
Stewart Cordiner
Mike Corner
Andrew Cosgrove
Glen Coutts
Charles Coward
Alan Cowie
Bel Cowie
James Coyle
Ruth Coyle
Michael Craik
James Cramb
Andrew Cranston
Mike Crawford
Johanne Crawford
Linsey Croall
Elizabeth Crombie
Coleen Cruickshank
Lesley Cullan
Robert Cummings

E

Matt Edgar
Gordon Edwards
Mark Edward
Charuta Pauline Ellis
Jennifer Ellis-Buckham
Sandra Emslie
Ilene Erskine
Benni Esposito
Alison Ewan
Lynsey Ewan
James R Ewen
William Ewen

F

Mateusz Fahreholz
James Fairgrieve
Joe Fan
Myrtle Farquharson
Annette Feinig
Winifred Fergus
Moirra Ferrier
F Ffolkes
Amy Fisher

Andy Dewar
George Dickie
Steve Dilworth
Andrew Dodds
George Donald
Jim Dine
Julia Douglas
Jean Downie
Jill Downie
Kate Downie
Peter Drewett
Jacqueline Drury
Lynn Duff
Harvey Duke
Lennox Dunbar
Wilma Dunbar
J H Duncan
Isla Duncan
Jim Duncan
Donna Dundas
H Duthie
Philip Duthie
W A Duthie

G

Neil Gall
Sarah Gallie
Jean Gardner
Julia Gardiner
Barbara Gemmell
Lindsey Gibb
Kerry Gibson
James Gibson
Mary Gillies
Brian Glassar
Peter Goodfellow
Heather Gordon
John Gordon
Suzanne Gore
Kim Gourlay
Elaine Gowans
Katrine Graham-Yooll
Keith Grant
Susan Grant
Leonard Gray
Julia Griffiths-Jones

H

Elspeth Halston
Mona Hansen
Lawrie Harris

E L Fisher
Hilary Fisher
Megan Fisher
Alistair Flattely
Ian Fleming
P D Fleming
Alex Flett
Theresa Flynn
Catriona Forsyth
Graham Fowler
Ruth Fowler
Alexander Fraser
Helen Fraser
Simon Fraser
Chris Fremantle
Ken Frewin
James Furneaux
Paul Furneaux
Hideo Furuta
Catherine A Fyfe

I

John Inglis
Sarah Innes
Inuit
Sera Irvine
Joanna Irvine
Khonosuke Iwasaki

J

Dave Jackson
William Jackson
Kitty Johnson
Tracey Johnston
John Johnstone
Stuart Johnstone
Gillian Jones
Myrddin Jones
M Lloyd Jones

K

Helen Kalvak
Brian Kelly
Donald S Kelman
Adele Kevan
Helen Kevan (Thomson)
John Kirkwood
Jack Knox
Hugh Kolb
Marco Krismanovch
Chris Ku

L

David Leverett
Cha Li
Elspeth Lamb
Sarah Lavers
Linda Le Kimff
Adrian Lear
Karen Lee
Debbie Lee

Rebecca Harkes
David Hawson
David Henderson
Emma Holden
John Houston
Peter Howson
Al Hyland
Charles Hynes

M

Neal Macdonald
E Maranjo
Margaret McConachie
Sandy McEwan
Anne McNeil
Sophie McPherson
Rory MacArthur
Brian MacBeath
Stuart MacDonald
Sheila Macfarlane
Gerald McGowan
Andy McGregor
Alastair Mack
Ian Macilwain
John Mackechnie
Kevin Mackenzie
Tom Mackenzie
George Mackie
Anne MacLean
John MacLean
Will Maclean
Daniel MacLeod
Margaret MacLeod
Norman MacLeod
David MacNeil
Karen Macpherson
N MacPherson
A.N. MacRae
Sadie Main
William Main
Victoria Mamnguqsualuk
William Marr
Cherry Massie
Ian Massie
Kirsty Mathieson
Norman Mathieson
Susan Matthew
Joseph Maxwell

Mary May
Hazel McAllister
Pat McArthur
Gladys McAvoy
Frances McBain
Chad McCail
Peter McCallum
Alan McCluskey
Bel McCoig
Helen McCoig
Malcolm McCoig
Leonard McComb
Claire McCormack
Kim Mc Cormack
Leona McConnell
David McCracken
Shona McCracken
Ian McCurrach
Heather McDonald
Jacqueline McDonald
Mike McDonnell
Stuart McDonald
Barry McGlashan
Donna McGlynn
Nicki McHarg
Gillian McInally
Ian McInnes
Rob McIntyre
Neil McIvor
Dougal McKenzie
Peter McKenzie
Tom McKenzie
Ian McKenzie Smith
Sarah McKenzie Smith
Fergus McLachlan
Jenny McLaren
Judith McLaughlin
Bruce McLean
Andrew McMorrine
John McNaught
Harris McPherson
Karen McPherson
Willie McPherson
John McRae
James McRobb
Ailsa McWilliam

N

Paul Napier
Glenn Neil
Thomas Newbolt
Doug Nicol
Avril Nicoll
Alex Nisbet
Nicole Niven

Fiona McWilliam
Ruth Maxwell
Jane Merson
Meta Meston
Edwin Mickleburgh
Judith Miller
Richard Millot
C Morey de Morand
Milan Milojevic
Christine Milne
Hollie Mitchell
Lorna Jane Mitchell
Gunnie Moberg
Mary Modeen
Vivien Moir
Jean Moncrief
John Mooney
Anne Moore
Layla Moosavi
Alan Morrice
Anne Morrison
James Morrison
Ilona Morrice
Alberto Morrocco
Leon Morrocco
Jacqueline Morton
Mark Moynihan
Morag Muir
Ian Munro
Liz Munro
Ailsa Murray
Annette Murray
Jo Murray
Jereme Muirez
Dr Campbell Murray
Dale Murray
Elma Murray
Theresa Mutch

O

Therese Oulton
Elizabeth Ogilvie
David Oudney
Mandy Owen
Pearl Ozanne

P

Michael Porter
Jan Pamula
Robin Palmer
Lilias Parry
Jacki Parry
Ian W Paterson
Mary Paton
Toby Paterson
Jim Pattison
Jon Pengelly
Joanne Petrie
David Pettigrew
Faye Phimister
Kerry Phippen
Margaret Pitt
Ronald Plowman
Charmian Pollok
Alex Porter
Evelyn Pottie
Frank Pottinger
Anne Marie Preiner
Yke Prins
Doug Prosser
Fiona Purvis

Q

Sarah Quayle

R

Barbara Rae
Paul Raine
Deborah Ravetz
Martin Rayner
Raula Razak
Philip Reeves
Edward Reid
Gordon Reid
Maureen Reid
William Reid
Gabrielle Reith
Patricia Reith

Giles Rencontre
 Lucy Richards
 Michael Riddell
 Maggie Riegler
 Rowan Risby
 Paul Ritchie
 Anne Roberts
 Claire Roberts
 Elspeth Roberts
 Geoff Roberts
 Mark Roberts
 Alasdair Robertson
 Barbara Robertson
 Ian Robertson
 John Robertson
 Margaret Robertson
 Rebecca Roche
 Willie Rodger
 Volker Rosenberg
 Alex Ross
 Cameron Ross
 Donnie Ross
 R R Rossvoll
 Hugh Rowson
 Bjorg Rullestad
 Colin Ruscoe
 Georgia Russell
 Neil Russell
 Ross Ryan
 Peter Rymill

G Shepherd
 Kathleen Shiach
 Anna Shirron
 Ian Smart
 Donald Smith
 Edward Smith
 E P Smith
 Gavin Smith
 RTH Smith
 Lyn Sneddon
 Eric Spiller
 Gordon Stables
 Robert Stephen
 William Stephen
 David Storey
 Lynne Strachan

T

Len Tabner
 Joe Tilson
 Andrea Turner
 Anita Taylor
 John Taylor
 Lisa Taylor
 Colin Thoms
 HelenThompson
 Alistair Thomson
 Bruce Thomson
 Christine Thomson
 Irene Thomson
 Lesley Thomson
 Michelle Thorning
 Angela Thouless
 Morcant Tod
 Pamela Toler
 Adrien Trascott

S

Ron Sandford
 N Sakelaropoulos
 Mark Scadding
 Bill Scott
 Louise Scullion
 Anna Sedgewick
 Ken Segan
 Pat Semple
 Steven Shankland
 Alison Sharp
 Iain Sharpe
 Mary Shaw
 David Shearer
 John Sheean
 Elizabeth Shepherd

V

Victor Vasarely
 Nick Veasey

W

Darlon Watkins
 Donald Wilkinson
 Michael Waight
 Alan Walker
 Frances Walker
 Ruth Walker
 Ally Wallace

Allan Watson
 Arthur Watson
 Duncan Watson
 Ronald Watson
 Willie Watson
 David Watt
 Gilbert Watt
 Gwen Watt
 Jane Watt
 Myrtle Watt
 Charles Webster
 Douglas Webster
 Peter Webster
 Daniel Welldon
 Adrian Welsh
 Edna Whyte
 Normana Wight
 Jim Wilkie
 George Wilson
 Jennifer Wilson
 Joan Wilson
 Mary Wilson
 Mark Wilson
 Peter Wilson
 Robin Wilson
 Vanessa Winship
 Colin Wishart
 Sylvia Wishart
 Roy Wood
 Judy Wrate

Y

Jennifer Young
 Clement Young
 J Ian Young
 Shirelle Young



Nicole Niven '9 Prints'

Grampian Hospitals Art Trust
The Art Gallery, Aberdeen Royal Infirmary, Foresterhill, Aberdeen AB25 2ZN

tel/fax: 01224 552429
email: art.office@arh.grampian.scot.nhs.uk

www.ghat-art.org.uk

Registered Charity no SCO 16910